

Overview

KS2 Attainment 2017-2019 · Actual results

192 pupils

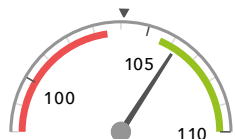
Average Scaled Score (Re, Ma)

% Expected standard+ (Re, Wr, Ma)

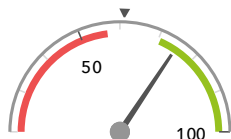
DFE

106.2+

75%+



Significantly above the national average (104.1) ◀



Significantly above the national average (61%) ◀

KS2 Progress 2017-2019 · Contextual Value Added

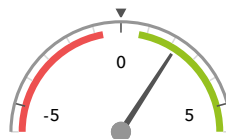
188 matched pupils

Average Scaled Score (Re, Ma)

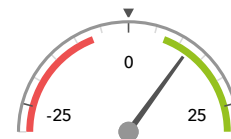
% Expected standard+ (Re, Wr, Ma)

+2.2+

+12%+



Significantly above the national average (0) ◀



Significantly above the national average (0%) ◀

KS2 higher and lower performing pupil groups 2017-2019

Minimum group size: 5

	Higher performing	Lower performing
Overall achievement pupil progress	SEN Support (35)+ Lower attainers (14)+ FSM (23)+	
KS2 reading achievement pupil progress	Black African (7) SEN Support (35)+ Lower attainers (14)+	
KS2 writing achievement pupil progress	Any Other (11) Male (98) Lower attainers (14)	Joined in Y5 or Y6 (6) Black Caribbean (9) FSM (in last 6 years) (40)
KS2 mathematics achievement pupil progress	FSM (23)+ Other Asian (5) SEN Support (35)+	
KS2 grammar, punctuation & spelling achievement pupil progress	Lower attainers (14) SEN Support (35)+ Autumn Term (62)+	Any Other (11) Black Caribbean (9)

Census information

KS2's latest academic year uses the Spring 2019 DfE census. Earlier years use that year's Spring census – [learn more](#) · [See recent Aspire updates](#)